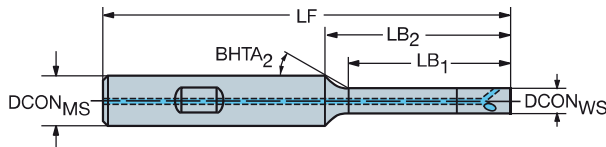


Weldon naar CoroMill® 327-adapter



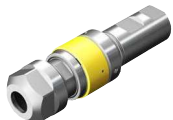
		Afmetingen, mm														
CZC _{MS}	CZC _{WS}	CNSC	CXSC	Bestelnummer	DCON _{MS}	DCON _{WS}	LSC	LF	LB ₁	LB ₂	BD ₁	BHTA ₂	BAR	NM	KG	RPMX
12	06	1	1	327-12B15SC-06	12.0	6.0	46	70.5	11.5	17.2	6.0	30°	20	1.80	0.07	40000
	06	1	1	327-12B21EC-06	12.0	6.0	46	76.5	17.5	23.2	6.0	30°	20	1.80	0.13	40000
	06	1	1	327-12B30EC-06	12.0	6.0	46	86.5	26.5	32.2	6.0	30°	20	1.80	0.13	40000
	06	1	1	327-12B42EC-06	12.0	6.0	46	96.5	38.5	44.2	6.0	30°	20	1.80	0.13	40000
16	09	1	1	327-16B18SC-09	16.0	9.0	49	74.3	12.2	18.8	9.0	30°	20	4.30	0.19	40000
	12	1	1	327-16B24SC-12	16.0	12.0	49	74.3	18.3	22.3	12.0	30°	20	6.50	0.10	40000
	09	1	1	327-16B32EC-09	16.0	9.0	49	94.3	26.2	32.8	9.0	30°	20	4.30	0.27	40000
	09	1	1	327-16B45EC-09	16.0	9.0	49	104.3	39.2	45.8	9.0	30°	20	4.30	0.20	40000
	09	1	1	327-16B64EC-09	16.0	9.0	49	124.3	58.2	64.8	9.0	30°	20	4.30	0.30	40000
	12	1	1	327-16B42EC-12	16.0	12.0	49	94.3	36.3	40.3	12.0	30°	20	6.50	0.28	40000
	12	1	1	327-16B60EC-12	16.0	12.0	49	124.3	54.3	58.3	12.0	30°	20	6.50	0.34	35000
	12	1	1	327-16B85EC-12	16.0	12.0	49	154.3	79.3	83.3	12.0	30°	20	6.50	0.39	30000
	14	1	1	327-16B42EC-14	16.0	14.3	49	93.5	35.5	37.5	14.3	30°	20	6.50	0.30	40000
	14	1	1	327-16B60EC-14	16.0	14.3	49	123.5	53.5	55.5	14.3	30°	20	6.50	0.37	35000
	14	1	1	327-16B85EC-14	16.0	14.3	49	153.5	78.5	80.5	14.3	30°	20	6.50	0.47	27000
20	14	1	1	327-20B35SC-14	20.0	14.3	51	93.5	28.5	33.2	14.0	30°	20	6.50	0.28	40000

S = Stalen schacht

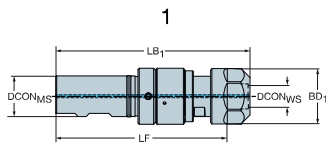
E = Gecementeerde hardmetalen schacht

Weldon naar CoroChuck™ 970

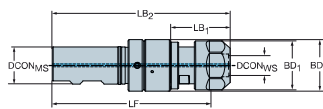
Koppeling werkstukzijde DIN 6499-B



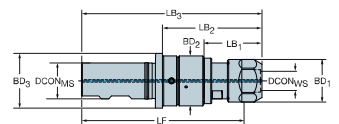
DSGN



2



5



		Afmetingen, mm																	
CZC _{MS}	CZC _{WS}	TRMAX	CNSC	CXSC	DSGN	Bestelnummer	DCON _{MS}	DCON _{WS}	LSC	LF	LB ₁	LB ₂	LB ₃	BD ₁	BD ₂	BD ₃	BAR	KG	RPMX
16	ER11	M5	1	1	2	970-WE16-11-052	16.0	11.3	44	91.5	25.2	96.4		18.7	23.5		80	0.18	8000
20	ER11	M5	1	1	5	970-WE20-11-052	20.0	11.3	50	97.8	25.2	48.6	102.7	18.7	23.5	28.5	80	0.22	8000
	ER20	M12	1	1	2	970-WE20-20-069	20.0	20.8	50	106.5	40.3	119.5		33.7	34.6		80	0.44	8000
25	ER11	M5	1	1	5	970-WE25-11-052	25.0	11.3	50	97.8	25.2	48.6	102.7	18.7	23.5	28.5	80	0.30	8000
	ER20	M12	1	1	2	970-WE25-20-069	25.0	20.8	50	106.5	40.1	119.5		33.7	34.6		80	0.47	8000
	ER25	M20	1	1	2	970-WE25-25-088	25.0	25.8	50	125.4	42.2	138.9		41.7	44.0		80	0.84	8000
	ER40	M30	1	1	1	970-WE25-40-117	25.0	40.8	50	151.4	167.9			63.0			80	2.10	8000
40	ER50	M48	1	1	5	970-WE40-50-164	40.0	52.0	70	211.8	78.5	134.8	234.3	78.0	80.0	86.0	80	5.20	8000

Ga voor reserveonderdelen naar www.sandvik.coromant.com



M1



N23



N15



N5